



Our Buda, Our Future Community Visioning Survey *Online Survey Summary*

An online survey was available to the public to gather community input for the development of the City of Buda Comprehensive Plan and Downtown Master Plan. The public input received during this effort is an important source of information for developing the community vision and priorities of the Buda community. This document is a summary of the input received through the survey.

Open 11/30/2022 – 2/3/2023 (66 days)

18 questions

786 respondents

NOTE: The comments contained in this report are a summarized compilation of respondent's responses, repetitive comments have been made into word clouds where the size of each word is determined by the number of times that word was used as a response. Open-ended comments were directly copied and were not edited.

**OUR BUDA
OUR PLANS**
SHAPE THE FUTURE OF OUR COMMUNITY!

Take the public survey launching November 30th
Sign up for project notifications at ourbuda.com

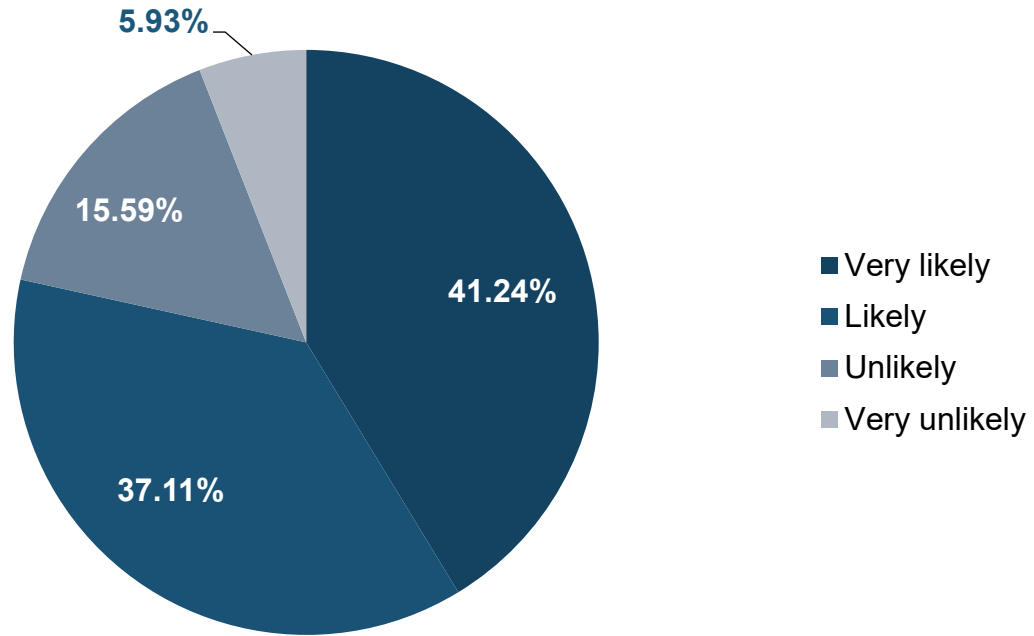
Survey Advertisement

Question #1 | Why do you choose to call Buda home? Please also share the name of your neighborhood.



TOP WORDS:
SMALL-TOWN, QUALITY, QUAINT

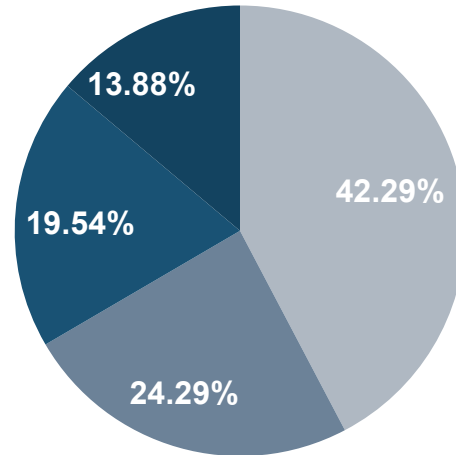
Question #2 | How likely or unlikely are you to recommend someone to move to Buda?



Question #3 | What would you say is the most critical issue facing Buda today?

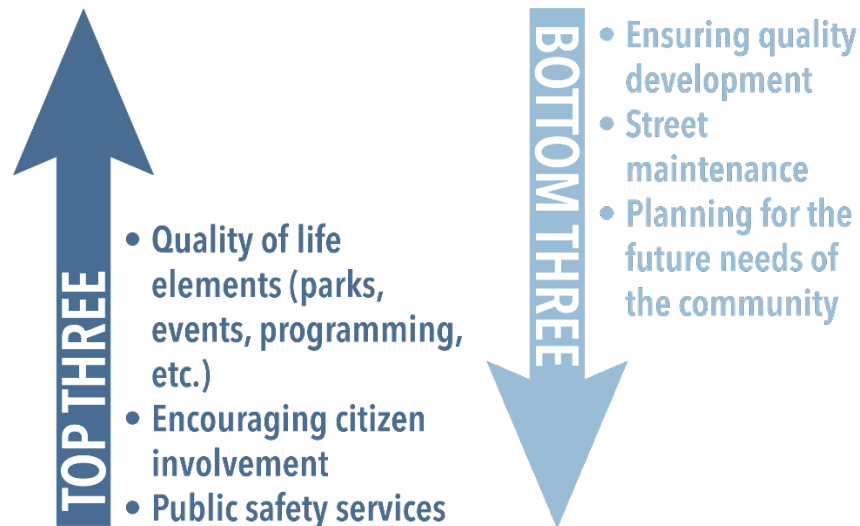
Category	Percentage
Traffic Conditions	63.95%
Housing Affordability	12.36%
Economic Growth	5.86%
Quality Schools and Education	4.20%
Community Character	3.69%
Parks & Open Space	2.42%
Internet Services	2.04%
Quality Neighborhoods	1.40%
Employment Opportunities	1.27%
Municipal Services	1.27%
Arts & Culture	1.15%
Access to Healthcare	0.38%

Question #4 | Consider new construction in Buda. Are the recent residential and commercial developments of the quality that you expect for the community?



Question #5 | How satisfied are you with the City of Buda’s performance for each of the following areas?

Below shows a graphic representing the responses of the survey’s question on satisfaction levels based on Buda’s performance in various topics. the top three satisfactory areas for Buda consist of: quality of life elements (parks, events, programming, etc.), encouraging citizen involvement, and public safety services. The three most unsatisfactory were: planning for the future needs of the community, street maintenance and ensuring quality development.



Question #6 | What should the City of Buda focus on to promote the community? Select up to three (3) choices.



Category	Percentage
Parks, trails, and open space	67.43%
Local businesses	59.29%
Festivals and events	37.40%
Historic preservation and education	32.44%
Retail and shopping	32.19%
Culture and arts	22.01%
Primary job development	18.32%

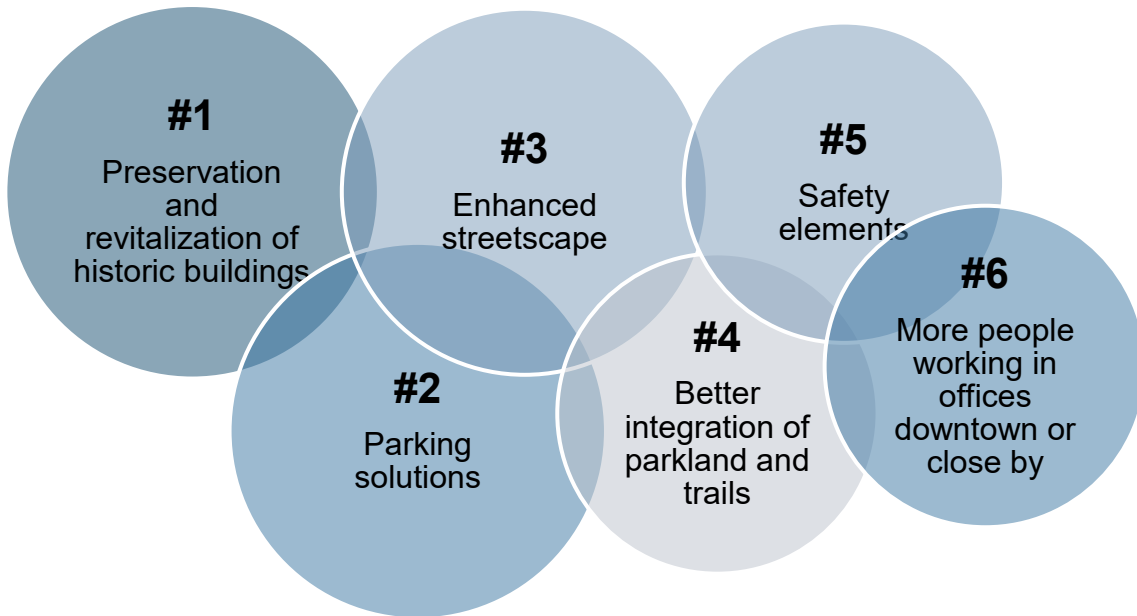
Question #7 | Which of the following best describes your current employment?

Category	Percentage
I work nearby but not in Buda	33.33%
I work exclusively remote for an employer outside of Buda	22.22%
I work remote 1-3 days a week for my employer	12.64%
I work in Buda	11.11%
I am retired or not currently employed	11.11%
I own a business in Buda (includes home-based business)	8.05%
I work exclusively remote for an employer in Buda	0.77%
I am a student	0.77%

Question #8 | As Buda grows over the next 20 years how much growth would you like to see in Downtown Buda?

Category	Percentage
Downtown changes at a moderate pace and adds vibrancy but not intensity.	58.26%
Downtown doesn't change very much, staying mostly at the same size and character that it is today.	24.71%
Downtown becomes a lively place with new housing, businesses, and amenities.	17.03%

Question #9 | In Downtown Buda, what are the most important types of improvements needed to encourage more investment and vitality in the area? Select up to three (3) choices.



Category	Percentage
Preservation and revitalization of historic buildings	59.92%
Parking solutions	53.94%
Enhanced streetscape (sidewalks, street trees, benches, etc.)	53.18%
Better integration of parkland and trails	42.49%
Safety elements (lighting, speed limit, pedestrian improvements)	32.19%
More people working in offices downtown or close by	10.18%
More housing in downtown or close by	8.65%

Question #10 | What kind of businesses/activities would you like to see more of in Downtown Buda? Select up to three (3) choices.

The top three responses to what kind of businesses/activities would the citizens of Buda like to see more of in Downtown Buda consist of sit-down restaurants, retail/shopping, and brew pubs/wine tastings.

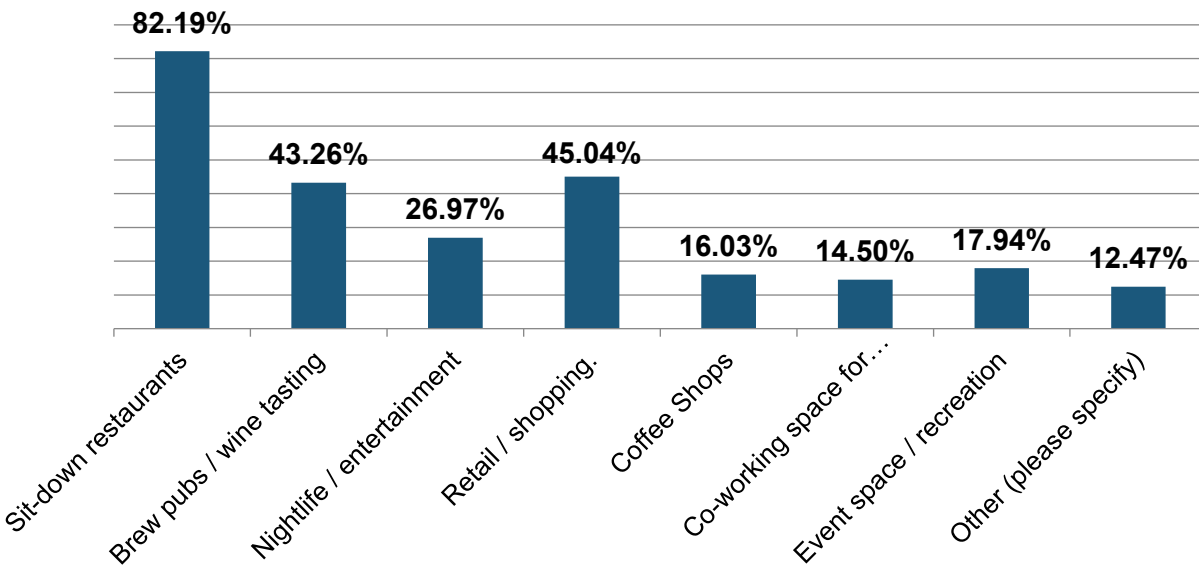
#1 - Sit-down restaurants



#2 - Retail and shopping



#3 - Brew pubs and wine tastings



Question #11 | The Downtown Buda plan will explore strategies for the creation of new retail corridors in Downtown Buda as Main Street and Railroad Street reach capacity. Which of these strategies do you feel should be further explored? Select your top two (2) choices.

Category	Percentage
Focus on facilitating the development of existing vacant and underutilized properties along Main Street and Railroad Street.	68.83%
Better connect downtown, City Park, and future greenway systems	49.24%
Support Main Street as a two-sided retail street with new buildings and development on the existing greenbelt area by the Gazebo and Welcome Center on both sides of the street.	35.75%
Allow a greater mix of commercial development (office and retail)	14.25%
Add additional residential multifamily within downtown	4.07%

Question #12 | What type of development character would you most like to see built along on the FM 1626 Corridor? Please rank the following, with one (1) being most important to you and five (5) being least important. You can drag and drop each line or pull down the box with numbers and re-rank.

#1 - Retail (Shopping & Dining)



#2 - Walkable mixed-use (residential, commercial, office)



#3 - Single family housing only



#4 - Jobs and industry (light industrial)



#5 - Mix of residential housing types

As shown in Question 12, the most important thing people would like to see build along the FM 1626 Corridor is retail, while the least important would be a mix of residential housing types.

Question #13 | If Buda established a citywide system of trails, what would be your primary use of these trails? Select up to three (3) choices.

#1 - Exercising (walking/running)



#2 - Enjoying natural in the Outdoor Capital of Texas



#3 - Visiting downtown Buda or a special event

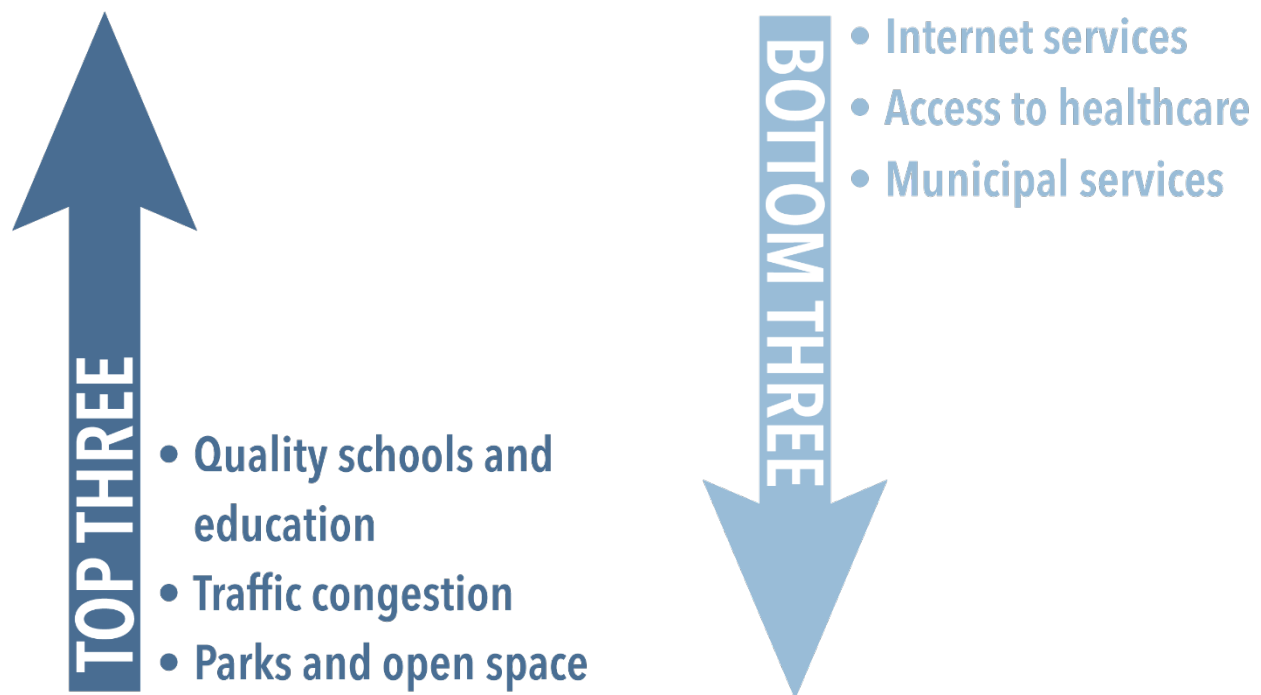
Category	Percentage
Exercising (Walking or running)	69.72%
Enjoying nature in the Outdoor Capital of Texas	44.15%
Visiting downtown Buda or a special event	40.59%
Walking with your children	35.88%
Riding bicycles / mountain bikes	32.44%
Walking your pet	32.06%
Getting to a school or a park	10.18%
Connecting to a regional trail	7.76%
Micro-mobility alternatives (Scooter, skateboard, electric cart, etc.)	4.07%
Getting to and from work	2.04%

Question #14 | If there is just one trail project that you could help get built in Buda, please describe where that trail should be. Provide as much detail as you can.

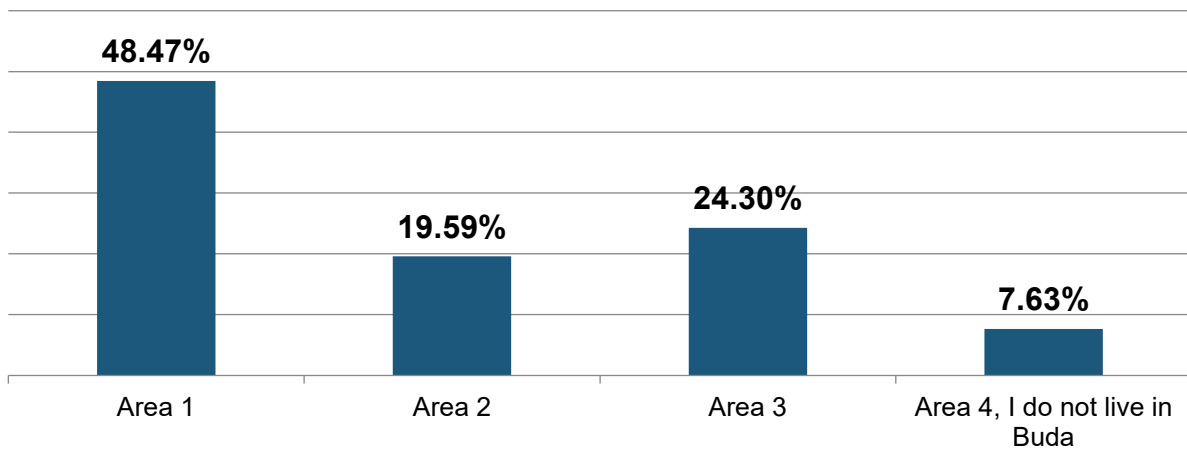
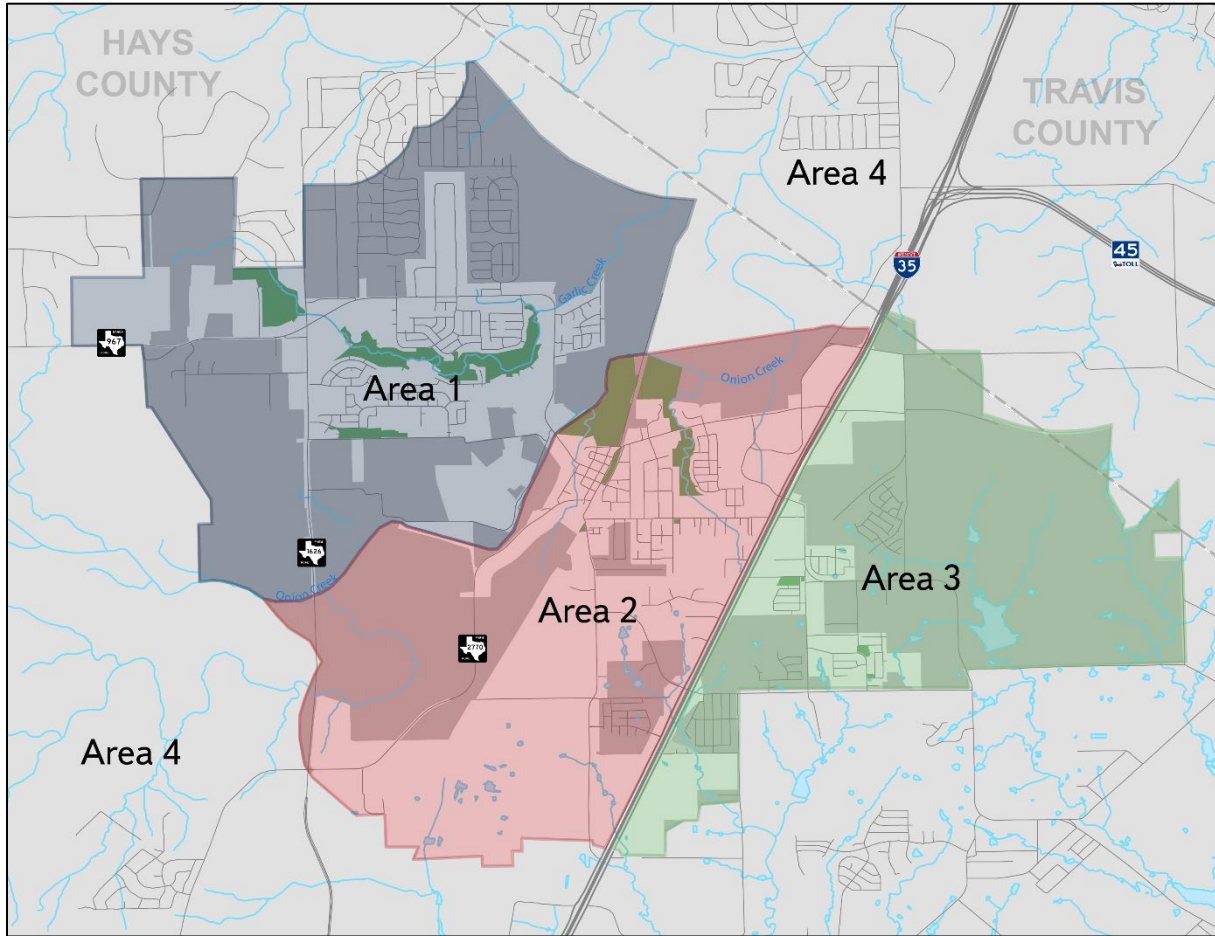
There were many responses to this question, but three responses were repeated continuously. Two of the locations that people wish for a trail would be: east of I-35 and 967 towards Downtown Buda. One idea that multiple people brought up was the creation of a disc golf course.

Question #15 | As you think about Buda 10 years from now, how would you rank the following in order of priority? Please rank the following, with one (1) being most important to you and eleven (11) being least important. You can drag and drop each line or pull down the box with numbers and re-rank.

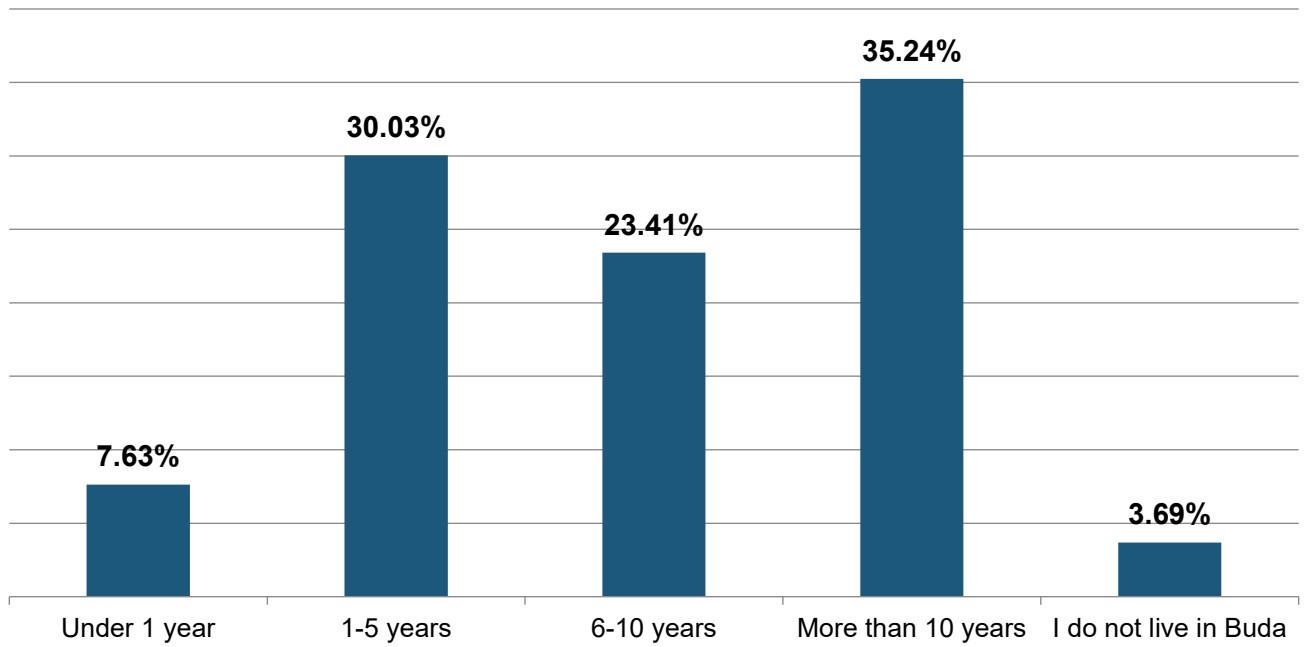
Shown below is a graphic illustrating the top three priorities of the future of Buda and the bottom three priorities. As shown below, the top three priorities consisted of quality schools and education, traffic congestion, and parks & open space. The bottom three priorities were internet services, access to healthcare, and municipal services.



Question #16 | Based on the map below, where in Buda do you live?



Question #17 | How long have you lived in Buda?



Question #18 | Of the following, where are you most likely to seek the latest information regarding this planning process?

Category	Percentage
Facebook	36.83%
City website	27.11%
Electronic newsletter	11.64%
Other social media	11.25%
Mail or utility bills	6.27%
Newspaper	5.12%
Local Television	1.79%

Takeaways

The Our Buda, Our Future Comprehensive Plan Survey gives a look into what the citizens of Buda would like to see for the future. This survey shows that 78.35% of the respondents would be likely to recommend to someone to move to Buda. The survey also showed that there was an overwhelming majority that the most critical issue within Buda today is the traffic conditions, at 63.95% of respondent’s answers. While the respondents are satisfied with the quality-of-life elements, public safety, and citizen involvement, they are less satisfied with the quality of development, the street maintenance, and the planning of future needs. The survey also touches on Downtown Buda. Over the next 20 years, 58.26% of respondents state that they want to see moderate change that adds vibrancy instead of intensity. To do that, the respondents believe that preservation and revitalization of historic buildings, parking solutions, and enhanced streetscapes should be a top priority in investment. Lastly, the survey respondents were asked about trails, most stated that they would use the trails as a form of exercise and enjoying nature. When asked what trail project they would like to see done in Buda, two responses were most prevalent: east of I-35 and FM 967 towards Downtown Buda.